

# State of Wyoming Corner Record

(In compliance with the *CORNER PERPETUATION AND FILING ACT*, Wyoming Statutes, 1997 Section 33-29-140 et. se., and the Rules and Regulations of the Board of Professional Engineers and Professional Land Surveyors)

Reverse side of this form may be used if more space is needed.

Record of original survey and citation of source of historical information (if corner is lost or obliterated). Description of corner monumentation evidence found and/or monument and accessories established to perpetuate the location of this corner. Sketch of relative location of monument, accessories, and reference points with course and distance to adjacent corner(s) (if determined in this survey). Method and rationale for re-establishment of lost or obliterated corner.

**RECORD:** G.L.O. survey by Charles H. Caton in 1873; a Sandstone 30x24x13, set 9 inches deep, marked 5 notches on south face and 3 notches on east face.

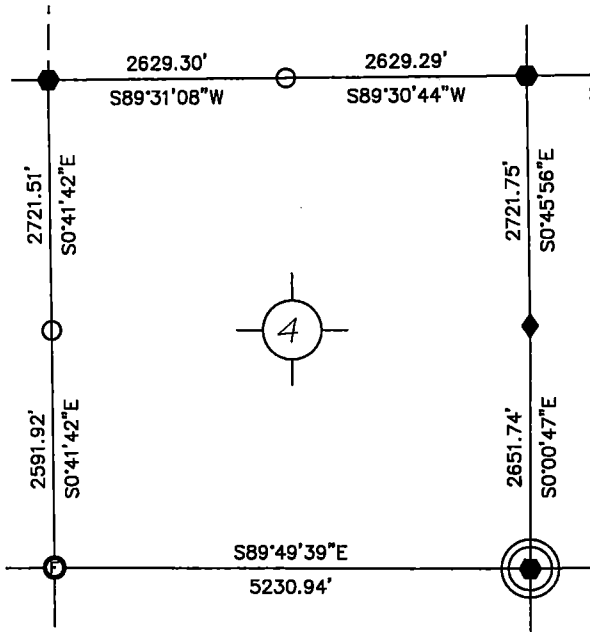
**FOUND:** Nothing

**Re-monumentation:** Using double proportion from the N.W. Section 9 to the N1/4 Section 10, and from E1/4 Section 9 to E1/4 Section 4, set 2.5 inch aluminum cap on 3/4x26 inch rebar with cap 0.3 ft above ground and construct rock mound around corner point, with 3/8" diameter fiberglass marker rod, 48 inch in length alongside corner point as shown in sketch.

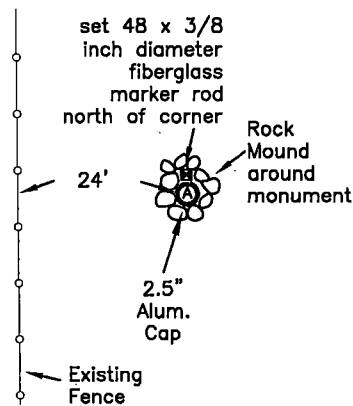
**NOTE:**  
COORDINATES SHOWN ARE BASED UPON  
NAD83 WY EAST ZONE AND NAVD 88  
VERTICAL DATUM USING GEOID 12B  
FROM HARN NGS PID# MN0253 "D50"

Point #	North	East	Elev.
1761092	351982.38	924062.18	5322.70

**NOTE:**  
BEARINGS AND DISTANCES SHOWN HEREON ARE  
BASED UPON GRID USING NAD83 WYOMING EAST  
ZONE AND TRIMBLE R8 GPS OBSERVATION

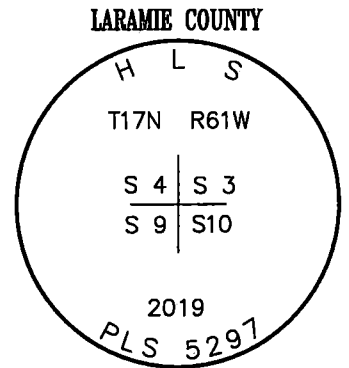


**SKETCH**



**Monument Location**

corner referenced this record =

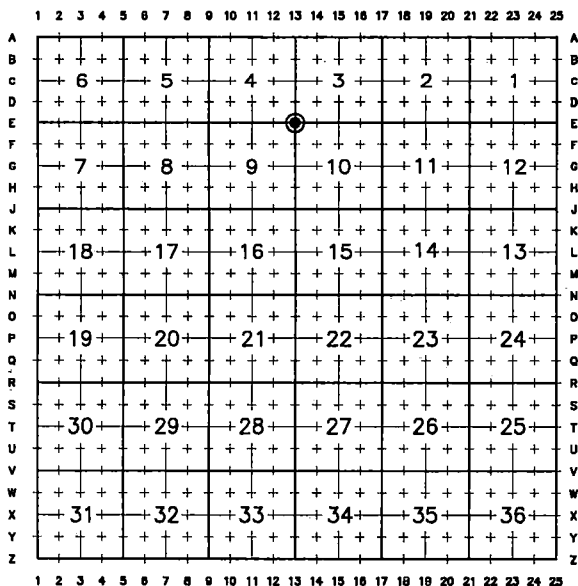


**Monument Inscription**

Date of Field Work: Nov. 2, 2019

Office Reference: DRG-21973, Pt.1761092

**Cross Index Plat**



Firm/Agency, Address

this corner record provided by:

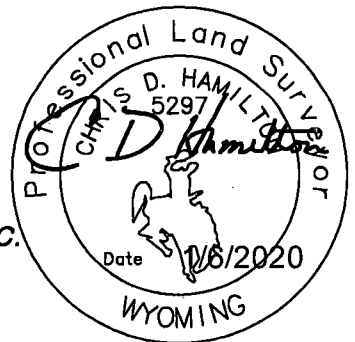
**HAMILTON  
LAND  
SURVEYING**

UNDER CONTRACT TO:

**DRG** RIFFIN & ASSOCIATES, INC.  
1414 ELK ST., SUITE 202  
ROCK SPRINGS, WY 82901  
(307) 362-5028

This corner record was prepared by me or under my direction and supervision.

SEAL & SIGNATURE



RECP #: 769473

RECORDED 1/15/2020 AT 2:04 PM BK# 2655 PG# 1762  
Debra K. Lee, CLERK OF LARAMIE COUNTY, WY PAGE 1 OF 1

STATE of WYOMING, Office of Clerk & Recorder, County of Laramie  
this block provided for county filing documentation

Corner Name: Southeast, Section: 4, T. 17N, R. 61W, 6th P.M., Cross-Index No.: E-13

SBRPEPLS/PLSW: March 1994; PLSW January 1998

County: LARAMIE, Wyoming